

# SEM636D Wheel Loader



**SEM636D**

## Product Advantage

- High Productivity
- Best-in-class Reliability and Durability
- Excellent Fuel Economy
- Outstanding Operator Comfort

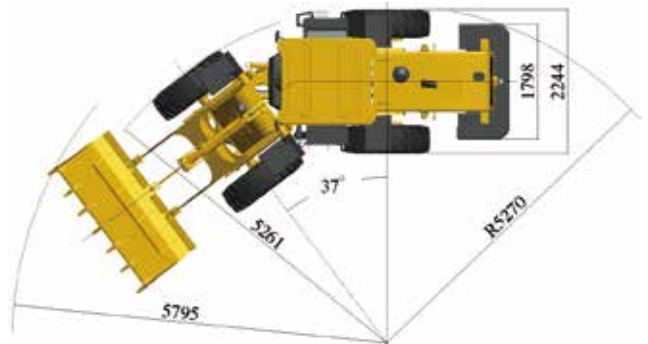
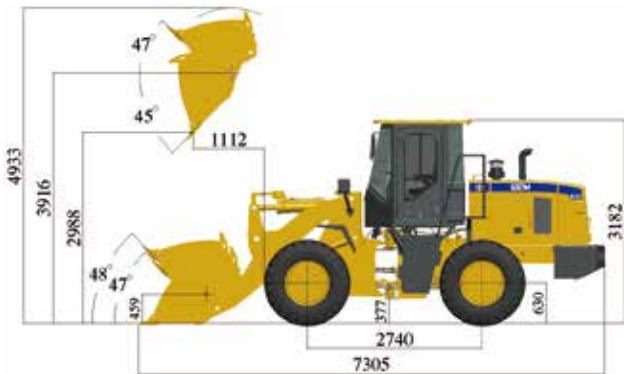
Website <http://www.semmachinery.com>



## Main Specifications

Items		SEM636D	Items		SEM636D
<b>Main Specifications</b>			<b>Engine</b>		
Rated Load	kg	3000	Model		Weichai WP6G125E22
Operating Weight with Standard Bucket	kg	9900	Rated Power	kW	92
Bucket Capacity	m <sup>3</sup>	1.5-2.5	Rated Speed	r/min	2200
Wheel Base	mm	2740	Displacement	L	6.754
Overall Dimension	mm	7305*2354*3182	<b>Implement Hydraulic</b>		
Operating Specifications			Implement System Type		Gear pump
Breakout Force	KN	113	Boom Raise Time	s	4.65
Dump Clearance	mm	2988	Hydraulic Cycle Time	s	8.34
Articulated Angle		37±1	System Pressure Setting	Mpa	18
Transmission			<b>Service Brake</b>		
<b>Transmission Type</b>		Countershaft,power shift			Dry&caliper,air to oil control
					"Drum type shoe brake, spring applied & oil released"
Transmission Gears		F4/R2	<b>Steering System</b>		
Torque Converter Type		Single stage 3 elements			
Maker & Type		SEM TR100	System Type		Shared Flow
Forward I/Reverse I		7.9/9.7	Steering PumpType	Mpa	Gear pump
Forward II/Reverse II		14/31	System Pressure Setting		14
Forward III/Reverse III		25/NA	Steering Angle (L/R)		37±1
Forward IV/Reverse IV		39/NA	<b>Tires</b>		
<b>Axle</b>			Size		17.5-25
Main Drive Type		Spiral bevel gear,single stage	Type		PR
Final Drive Reduction Type		Planetary type,single stage	Layer		12
Rear - Oscillating +/-		±12	Txtured Type		L-3

## Machine Dimensions



► Note: the above dimensions are based on the standard configuration.

**Caterpillar (Qingzhou) Ltd. Address: No.12999 Nanhuan Road,Caterpillar Industrial Park, Qingzhou City,Shandong Province, Zip Code: 262500 P.R.China**

© Materials and specifications are subject to change without notice. Featured machines in photos may include optional equipment. See your SEM dealer for available options.

© 2017 Caterpillar (Qingzhou) Ltd. All Rights Reserved. SEM Machinery, SEM, their respective logos, trade dress as well as corporate and product identity used herein, are trademarks of Caterpillar (Qingzhou) Ltd. and may not be used without permission.

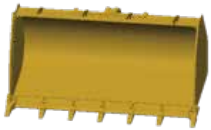
Version: Version: May 2017 - Weichai II

## Machine Applications

- Multiple work tools are available for selection



## Work Tool Options



Standard bucket 1.7



Bucket 1.5



Bucket 2.5



QC strengthen log fork



QC standard bucket 1.7



Sand bucket 1.5



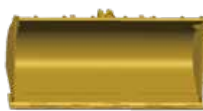
Bigger capacity log fork



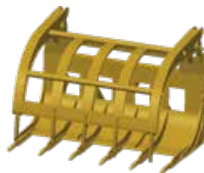
Strengthen log fork



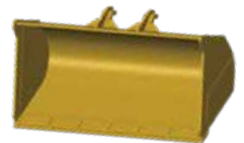
Coal bucket 2.5



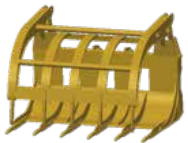
Standard bucket BOCE1.5



Hay fork



QC coal bucket



QC hay fork



Quick Coupler



Log Gipper



Quick Coupler



Quick Coupler



## Serviceability

- System pressure test ports are standard
- Big angle engine hood side open door provides easy service access
- Torque converter is isolated from transmission making it easy to service



## Safety

- Safety design complies with all regulatory requirements
- Caterpillar Production System (CPS) leveraged in manufacturing process
- 3-point touching design provides convenient operator entering to cabin
- Backup alarm ensures machine safety



## Reliable Drivetrain

- Countershaft transmission with upgraded core components provides high reliability
- Large rim-pull in 1st gear and higher speed in 2nd gear provide high efficiency for load and carry applications
- Clutch cutoff selection switch ensures stable and safe operation
- simply Torque convert and efficiency is high
- Shift smooth and comfortable



## Advanced Cooling System

- High efficiency cooling package
- Shock pad mounts ensure reliability under severe applications



## Solid Structure

- Structures undergo Finite Element Analysis (FEA) and On Machine Stress Analysis (OMSA) to ensure durability
- Performance Series (PS) buckets improve loading capability





## Weichai Engine

- The air cleaner provides machine reliability even in the most severe applications



## Efficient Hydraulic System

- Single pump flow shared system.
- More efficiency and larger breakout force
- Perfect match between machine speed and hydraulic system to achieve high efficiency
- Joystick hydraulic control for easy and precise control



## Operator Station

- Premium operator station with big space and superior visibility
- Patented MAC mount provides less noise and more comfort
- Adjustable suspension seat
- Sliding side window and AC with fresh air circulation provide operator comfort
- Single lever shifting is flexible and convenient
- Adjustable air flow outlet delivers better defrost performance

